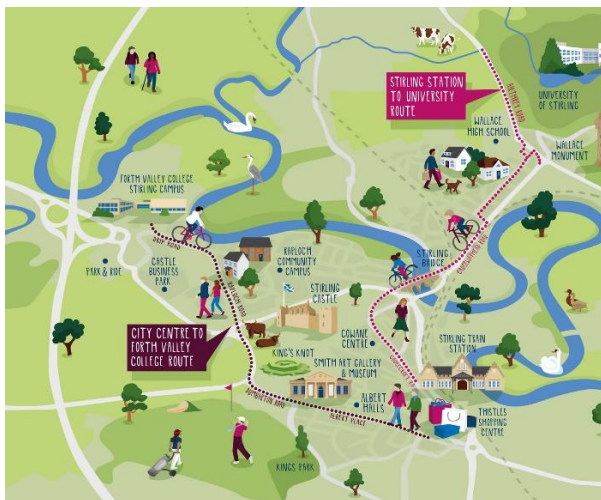


# Construction is fully underway for new segregated walking and cycling routes in Stirling

[Walk, Cycle, Live Stirling](#) is a project targeted to transform the city of Stirling into a more sustainable, vibrant and accessible place for everyone to live, work and visit. Two key transport corridors will be created to make it easier for people to walk and cycle into the city centre. The University Route links up Stirling University to the train station and the College Route links Forth Valley College and Raploch to the city centre.



## Construction

After many years of planning, design and consultation, construction started along Raploch Road in spring 2022 and on Goosecroft Road in summer 2022. It is fantastic to see the progress that has been made along Raploch Road in just a few short months. This section is due for completion at the end of August and will link up with the cycle path along Millennium Way, the A84.



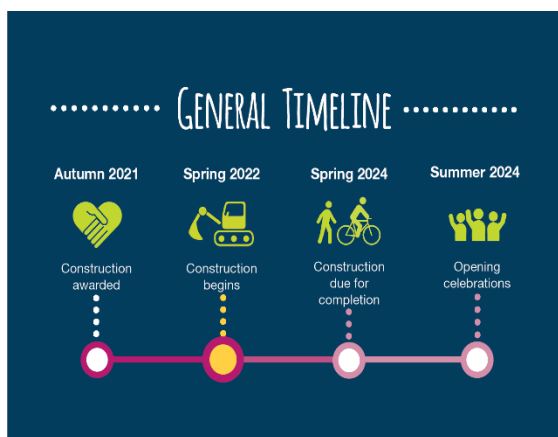
*Raploch Road, 22/06/22*

The Goosecroft Road section is progressing well. Being right in the city centre it will increase the visibility of cyclists significantly, helping to normalise cycling as a healthy, sustainable, efficient mode of transport.



Goosecroft Road, 30/06/22

The next sections of the route to start construction are Dumbarton Road and Causewayhead Road. To keep up to date with the construction schedule, go to the [website](#) where all updates will be posted.



### Walking and Cycling Index launch

[Stirling's Walking and Cycling Index](#) was officially launched on the 30<sup>th</sup> June. This is a joint partnership with Sustrans to report on progress towards making walking, wheeling and cycling an attractive and everyday means of travel. Inspired by the Copenhagen Bicycle Account, the Walking and Cycling Index (formerly Bike Life) is an assessment of city walking, wheeling and cycling development,

including infrastructure, travel behaviour, satisfaction, the impact of walking, wheeling and cycling, and new initiatives. This is a very interesting report which highlights that the vast majority of residents in Stirling support placemaking and active travel improvements.



### Stirling Station Upgrade

There is a lot going on in Stirling this year with the [Stirling Station project](#) about to start construction this summer. This project will link in with the Walk, Cycle, Live Stirling University route encouraging more people to walk and cycle to the station.



We are always keen to hear from you, so do contact us with stories, suggestions on how we can help more people walk, wheel and cycle as well as any queries about the project at [walk-cycle-live@stirling.gov.uk](mailto:walk-cycle-live@stirling.gov.uk)

